

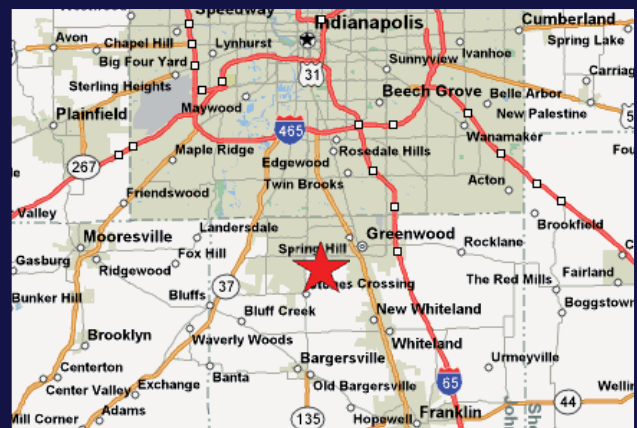
FOR SALE

1630 WEST CURRY ROAD
Greenwood, IN 46143

- Zoned Multi-Family/Residential
- 7.29 Acres
- Daily Traffic Counts:
Curry Road: 1,342
State Road 135: 34,993
- 216 Unit Devonshire Apartments directly across from property
- Minutes from Smith Valley Road and State Road 135
- Center Grove Schools



	<u>3 miles</u>	<u>5 miles</u>
<u>Population</u>		
2000	50,769	107,135
2008	59,541	123,047
2013	65,058	133,021
<u>Households</u>		
2000	18,686	42,119
2008	22,233	49,006
2013	24,511	53,467
<u>Income</u>		
Avg. Household Income	\$81,876	\$71,388
Median Household Income	\$67,645	\$58,907
Per Capita Income	\$30,817	\$28,635



Sales & Leasing

317.422.9000

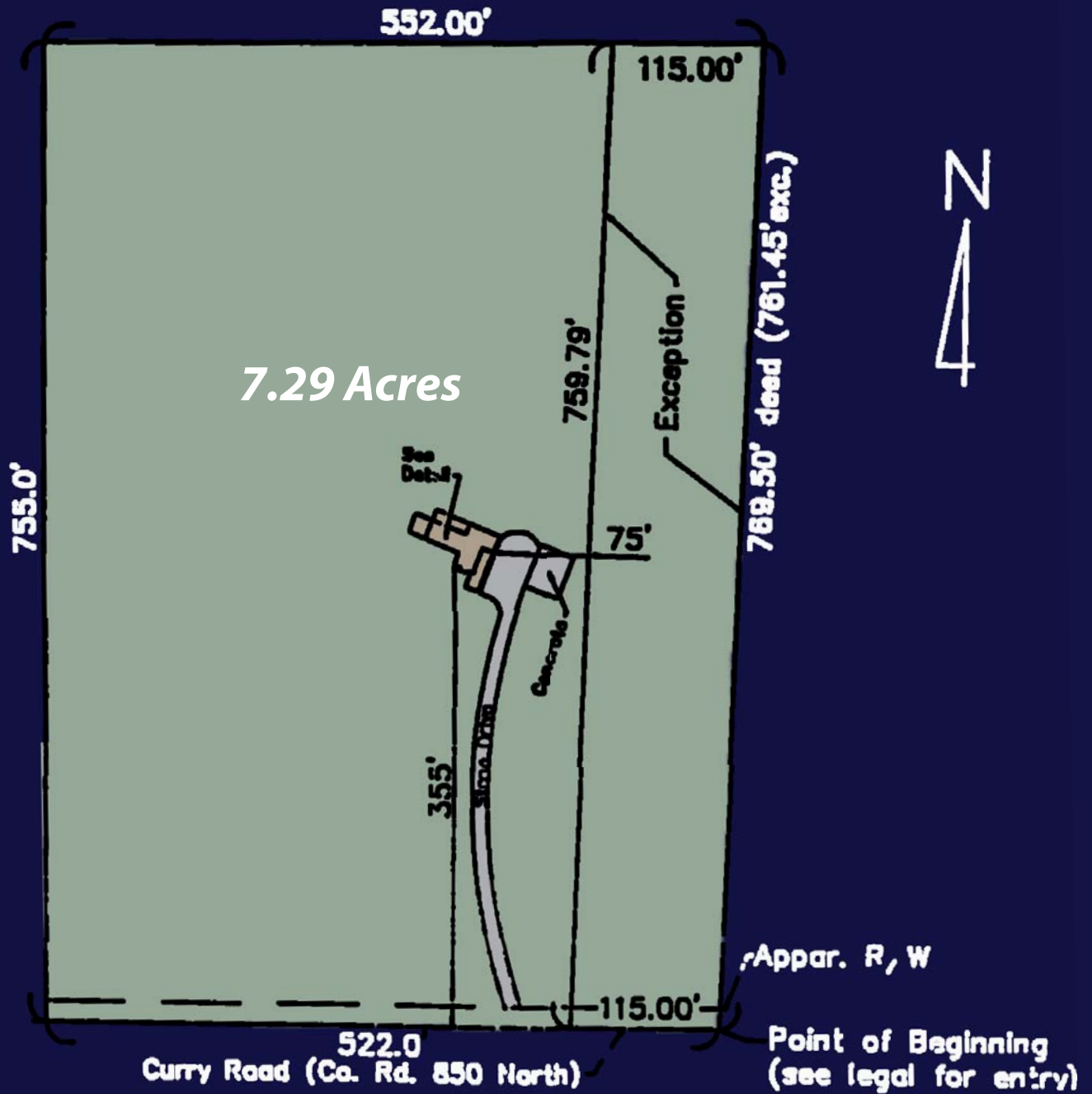
www.welbournecompanies.com



COMMERCIAL DEVELOPMENT
CONSTRUCTION
PROPERTY MANAGEMENT

1630 WEST CURRY ROAD

Greenwood, IN 46143



Sale Price: \$475,000

Sales & Leasing

317.422.9000

www.welbournecompanies.com



WELBOURNE
COMPANIES

COMMERCIAL DEVELOPMENT
CONSTRUCTION
PROPERTY MANAGEMENT